

## DRILL HOLE LOG

COORDINATES 0+57S-15+81W  
ELEVATION 4100 FT. 1250M  
DIP 60°  
AZIMUTH 032°  
SCALE

CORE SIZE NQ  
HOLE STARTED APRIL 23/80  
HOLE COMPLETED APRIL 26/80  
LOGGED BY U. SCHMIDT

(M)

FOOTAGE

DESCRIPTION

(M)

10

20

30

(12)

40

50

60

(6)

BEDROCK

Road River Inn.?

Canal? dirt pitbl long?

dark grey to black non-calcareous, mudstone

- pyritic in part, light grey carbonate, pyritic and  
12-20-10% fragmental lithic fragments, visible in some sections  
fragments aligned to strong foliation / cleavage  
low angle to bed axis

Blocky ground, highly fractured orange brown rusty, weathering  
on some fractures

20° 40° to joint strike 150° 180° strike 20° from FOLIATION STRIKE

PEBBLY MUDSTONE

med → dark grey non-cal. mudstone with white dolomite  
and lithic clasts, pyritic in places usually associated  
with white carbonate fragments are deformed if  
hardness pseudo-bedding, open space filling & observed  
in fracture at shallow & to core, filled c quartz, dol, subbed  
py

20

20 90° to each other in strike - 1 = pseudo bedding

VERTICALLY OR SHALLOW N  
DIP INDICATED x 30° N

Broken ground - c quartz, carbonate, vein filling

6.4

11.6

17.7

# DRILL HOLE LOG

HOLE No. 80A2  
PAGE 2 OF 6

COORDINATES  
ELEVATION  
DIP  
AZIMUTH  
SCALE

CORE SIZE NQ  
HOLE STARTED  
HOLE COMPLETED  
LOGGED BY U. SCHMIDT

(M)  
RIP

[illegible]

# DRILL HOLE LOG

HOLE No. 20A2  
PAGE 3 OF 6

COORDINATES  
ELEVATION  
DIP  
AZIMUTH  
SCALE

CORE SIZE  
HOLE STARTED  
HOLE COMPLETED  
LOGGED BY

(M)

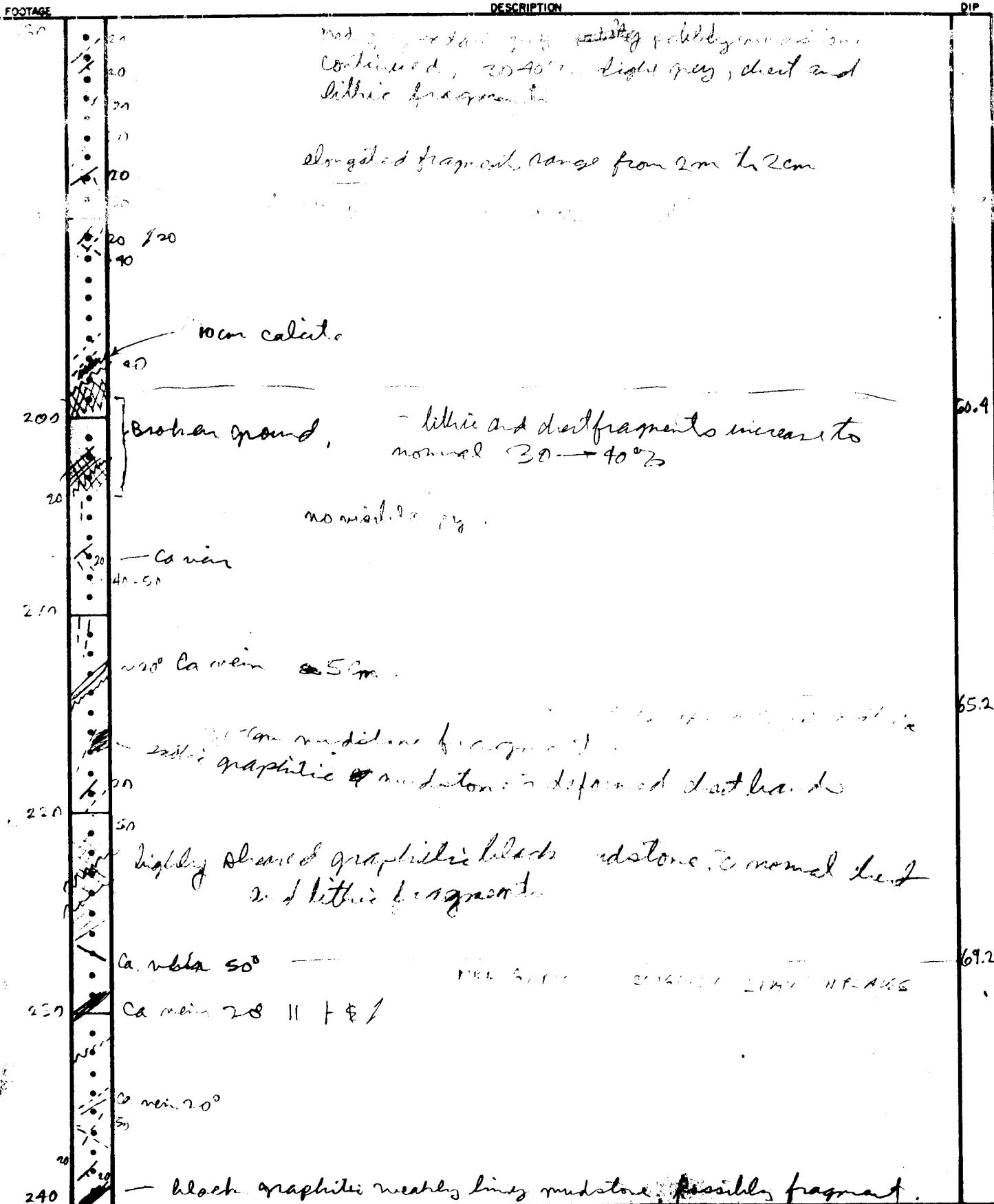
FOOTAGE	DESCRIPTION	DIP
120	med. gr. sandstone Continued	
125	thin purple sandstone	
130		
135		
140	highly fractured congl.	42.7
145		
150		45.7
155		
160		
165		
170	Co. filled bedding part - 10° to 20° N. of E.	
175	20 cm. clast of massive carbonaceous highly calcareous mudstone	
180	30° ← good exp. of bedding	

# DRILL HOLE LOG

HOLE No. 30112  
PAGE 4 OF 6

COORDINATES  
ELEVATION  
DIP  
AZIMUTH  
SCALE

CORE SIZE NQ  
HOLE STARTED  
HOLE COMPLETED  
LOGGED BY U. SCHMIDT



# DRILL HOLE LOG

HOLE No. 80A2  
PAGE 5 OF

COORDINATES  
ELEVATION  
DIP  
AZIMUTH  
SCALE

CORE SIZE  
HOLE STARTED  
HOLE COMPLETED  
LOGGED BY

FOOTAGE	DESCRIPTION	DIP
240		
250	black graphitic mudstone band, broken up. graphitic stichensides    bedding, sticho chert band - 70° conc possible fragment. lithic calcite filled fractures.	77.1
260	fractured core very limy. - fewer fragments than normal	
270	- fault gouge, pyroclitic material and carbon intense shearing    fol calc bedding and    calc in some cases. - remobilized calcite in fractures common.	80.8
280	30 20 40 70 good eg ch bedding.	83.5
290	30 30 ? more than normal light grey chert pebbly mudstone weaker limy calcite veins 2-5 cm x 10° conc	86.9
300	> Normal abundance of chert and lithic fragments	

# DRILL HOLE LOG

HOLE No. 20A2  
PAGE 6 OF 6

COORDINATES  
ELEVATION  
DIP  
AZIMUTH  
SCALE

CORE SIZE NQ  
HOLE STARTED  
HOLE COMPLETED  
LOGGED BY U. Schmitz

FOOTAGE	DESCRIPTION	DIP
300	Black graphitic pelitic mudstone, weakly to moderately laminar especially in fault - normal abundance of chert pellicles	
310	Ca in fracture - highly broken up core	96
320	intense failure 11 1/2 and 1	99
330	gone out	100.6
340	Sand Blown out core	103
350	acid test 47° corrected angle	
360		